



## ▲ Before

Last “refreshed” in the 1980s, this kitchen had a split personality, according to the new homeowner: “On one side it was Grandma’s kitchen, and on the other side it had a commercial range and restaurant shelf.”

## Markedly After

more efficient, the new kitchen boasts more work surfaces and storage on both sides of the divide. The biggest and best change: installing new windows higher on the wall, clearing the way for a longer countertop, wine cubbies, and a small writing station.

The subway-tile backsplash repeats the wall color as well as the horizontal lines of the windows, for a cohesive effect.

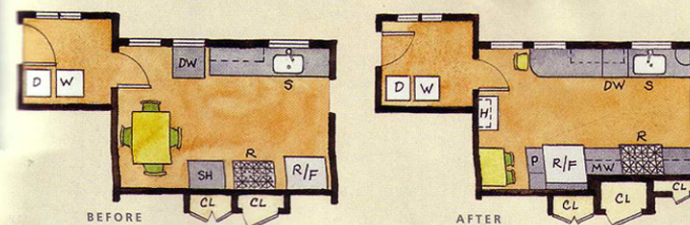
Pale green solid-surface countertops, though not true to the era of this older home, suit the young family’s active lifestyle.



Three-inch-wide wainscoting varies in height, rising to meet the windowsills and, in the far corner, the small display shelf.



► The existing range, now outlined in green tile trim pieces, is right at home in the new layout; a custom hood vents through the wall and then up to avoid the ceiling beam. Unmatched cabinet styles on either side of the range keep the look eclectic and casual.



**Floor plans:** Space borrowed from the kitchen is added to closets located in the adjacent hallway. Reversing the swing on the door to the outside makes doing the laundry easier.